

Shinshu Hida

信州

飛騨

ALPS WIDE Free Passport

Special Ticket

4 days of unlimited bus and train transport within the designated area.



Shinshu Hida Alps Wide Free Passport
(Including round-trip ticket for the Shinhotaka Ropeway)

Adults ¥12,000

¥9,800 with the winter discount from December to March

Shinshu Hida Alps Wide Free Passport

Adults ¥10,290

¥8,800 with the winter discount from December to March

Presenting this ticket at a range of tourist facilities will enable you to receive benefits such as discounted admission fees.

Please check beforehand to see which facilities offer benefits, and what kind of benefits are available.



濃飛バス Nohi Bus

ALPICO GROUP Alpicobus

<https://www.nouhibus.co.jp/> <http://www.alpico.co.jp/>

This information is correct as of July 2016.

A world of spectacular nature awaits you, surrounded by the Japan Alps.

Shinshu-Nagano-



Kamikochi



Norikura Highlands



Shirahone Onsen



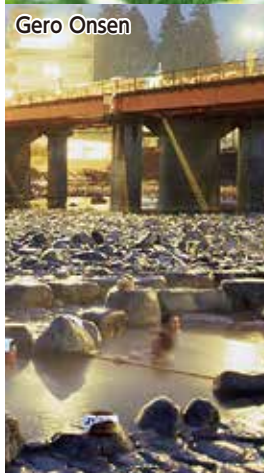
Matsumoto Castle

Feel the ancestral Japanese lifestyle, similar to Kyoto's traditional atmosphere.

Hida-Gifu-



Shirakawa-go



Gero Onsen



Hida Takayama



Shinhotaka Ropeway



Hida Takayama



Shinhotaka Ropeway



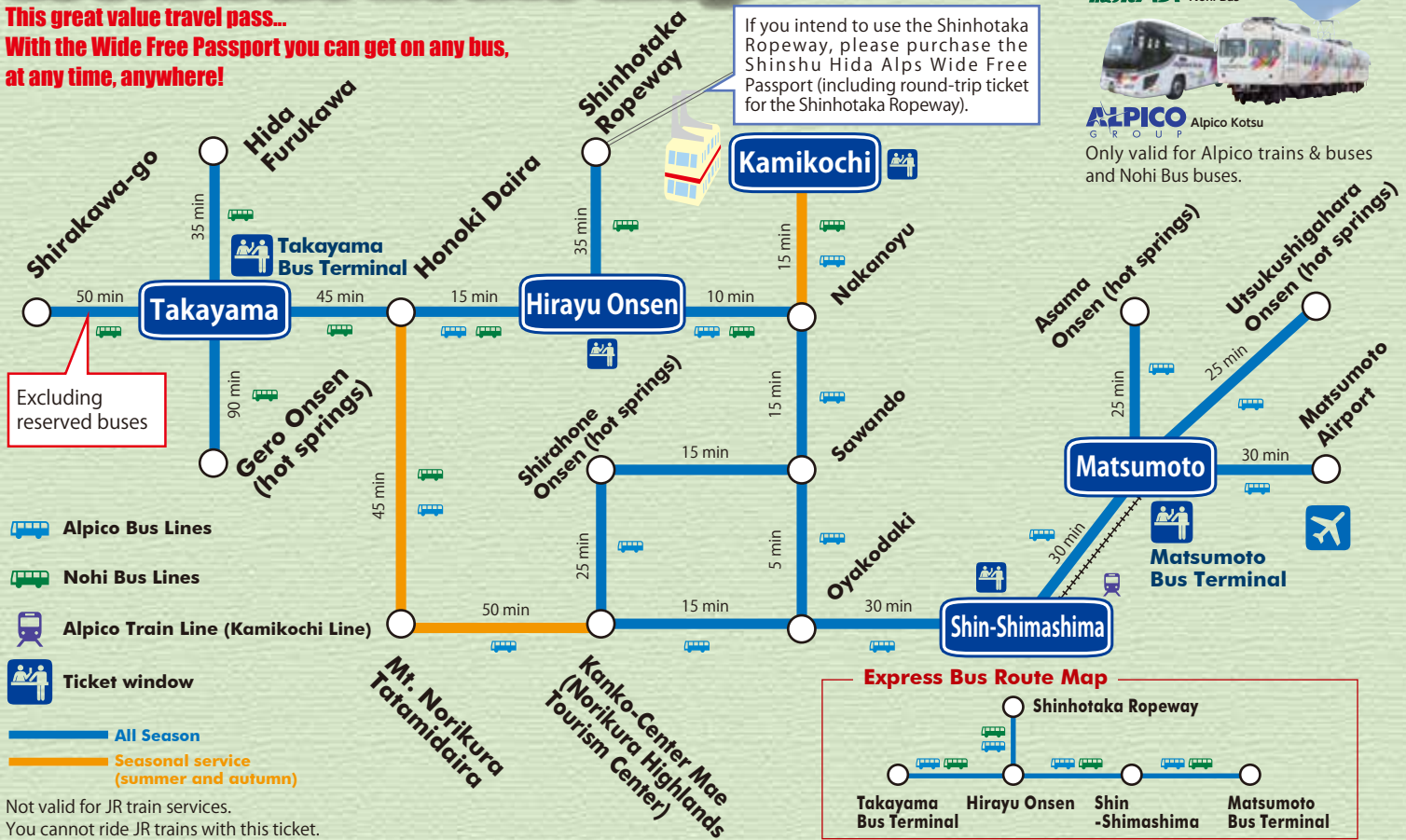
Kamikochi



Matsumoto Castle

Local Bus Route Map

**This great value travel pass...
With the Wide Free Passport you can get on any bus,
at any time, anywhere!**



Shirakawa-go



Mt. Norikura Tatamidaira



Norikura Highlands



Shirahone Onsen

Shinshu Hida Alps Wide Free Passport (Including round-trip ticket for the Shin-Hotaka Ropeway)				
Valid for 4 days from first use	Adults	¥12,000 (¥9,800 from December to March)	Children	¥6,000 (¥4,900 from December to March)
Shinshu Hida Alps Wide Free Passport				
Valid for 4 days from first use	Adults	¥10,290 (¥8,800 from December to March)	Children	¥5,150 (¥4,400 from December to March)

Children are aged 6 to 11, Adults 12 & over.

- This pass is valid on all bus and train lines shown on the route map.
- Some lines are closed from late November until mid-April.
- Some lines operate seasonally. Please check operation dates in advance.
- Depending on the line, you may need to collect a boarding ticket to indicate the zone where you boarded the bus.
- No refunds after first use. Prior to first use, refunds can be made after subtracting the handling fee.
- Tickets are non-transferable and lending tickets to a third party is prohibited.

Available at

Matsumoto Bus Terminal
Shin-Shimashima Station
Kamikochi Bus Terminal

<http://www.alpico.co.jp/>

Available at

Takayama Bus Terminal
Gero Bus Center
Hiryu Bus Terminal
Shirakawa-go Tourist Information Center
Furukawa Travel Salon

<https://www.nouhibus.co.jp/>

- When boarding, please show your ticket with printed validity period to the driver or crew member.
- Not valid for services between Takayama and Shirakawa-go that require reservation.
- To reach Kamikochi from Matsumoto, take a Kamikochi Line train from platform 7 at JR Matsumoto Station to its terminus at Shin-Shimashima Station. From there, please transfer to a Kamikochi bound bus.
- There are also direct busses to Kamikochi from Matsumoto Bus Terminal.